

Cryo Anlagenbau



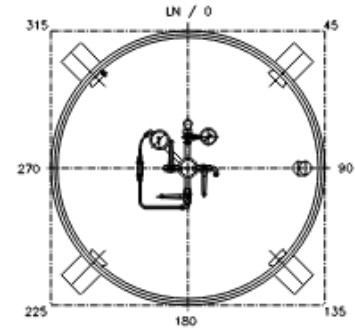
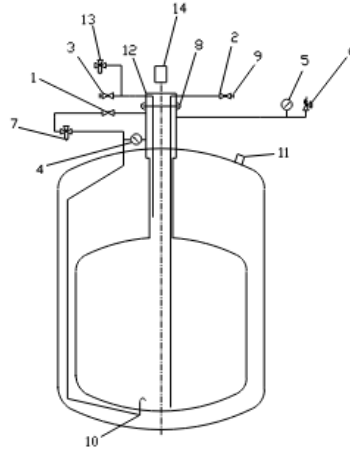
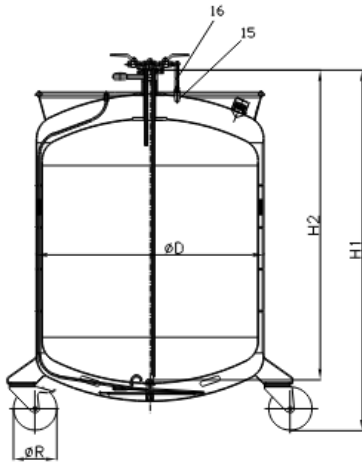
PRODUCT SPECIFICATIONS (Low pressure)

MODEL	CS 30 SK	CS 60 SK	CS 100 SK	CS 120 SK	CS 160 SK	CS 200 SK	CS 250 SK	CS 300 SK	CS 400 SK
Usable volume (L)	30	60	100	120	160	200	250	300	400
Perm. operativ pressure (Bar)*	1,5	1,5	1,5	1,5	1,5	1,5	1,5	1,5	1,5
Weight empty (kg)	42	51	66	70	95	120	131	150	194
Weight full (kg)**									
LN2	66	100	147	167	224	282	333	393	518
LO2	76	120	180	207	278	348	416	492	650
LAr	84	135	205	237	318	399	480	568	752
Static evaporation rate naked vessel (% / d)***	3,8	2,5	1,3	1,3	1,2	1,2	1,2	1,2	1,0
Neck diameter (mm)	KFDN 50	KFDN 50	KFDN 50	KFDN 50	KFDN 50	KFDN 50	KFDN 50	KFDN 50	KFDN 50

* Other pressures on request

** The weights may vary depending on the equipment

*** At standard conditions without inserts



	D	H1	H2	R Ø
CS 30 SK	450	726	547	80
CS 60 SK	450	1000	803	100
SC 100 SK	550	1082	863	125
SC 120 SK	550	1196	977	125
CS 160 SK	600	1230	1032	125
CS 200 SK	700	1247	984	160
CS 250 SK	700	1399	1131	160
CS 300 SK	700	1553	1295	160
CS 400 SK	900	1330	1107	160

The main features

1	pressure built up valve 3/8" (green)
2	fill / discharge valve 3/8" (red)
3	venting valve 3/8" (yellow)
4	differential pressure indicator
5	pressure gauge
6	safety valve 1,5bar
7	pressure built up regulator (optional)
8	clamp for small flange DN50
9	3/4" UNF16-3/8"
10	pressure building coil
11	vacuum valve 0,5bar
12	withdrawal head with small flange DN50
13	pressure reducing regulator (optional)
14	digital level indicator (optional)
15	phase separator
16	flexible stainless steel hose DN10 with clamping nut 3/4"-16 UNF inside